

# Healthcare 2015: The Impact of the Obama Presidency

WEDNESDAY, DECEMBER 10, 2008

SPONSORED BY:



# Today's Speakers

## Panelists:



Dr. Peter Budetti

Department of Health Administration and  
Policy, University of Oklahoma Health Sciences  
Center



Dr. Len Nichols

Director, Health Policy Program  
The New America Foundation



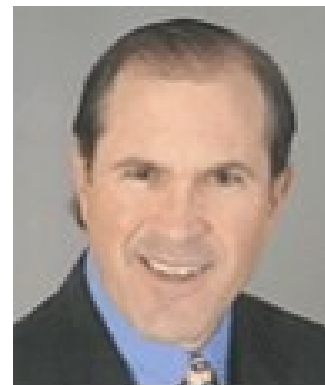
Dr. Paul Grundy, MD, MPH

Director, Healthcare Transformation  
IBM Healthcare and Life Sciences

---

## Hosted by:

Dan Pelino  
General Manager,  
IBM Healthcare and Life Sciences



# Healthcare Reform 2009

---

Peter P. Budetti, M.D., J.D.

Edward E. and Helen T. Bartlett Foundation

Professor of Public Health

Department of Health Administration and Policy

College of Public Health, University of Oklahoma



SCHOOL OF  
COMMUNITY  
MEDICINE®

The University of Oklahoma Health Sciences Center  
**College of Public Health**

# 2009 ≠ 1993

- Economy
- Congress
  - House
  - Senate
- White House
- Interest Groups
- Level of Debate



# 2009 ≠ 1993

## ■ Economy

### □ 1993:

- Coming out of recession July 1990 – March 1991
- Economy on verge of sustained expansion

### □ 2009:

- After 10 years of growth, we are now already in a recession for past 12 months
- 1.9 million jobs lost – with most Americans dependent on employment-related health coverage
- Health sector largest part of economy, highly profitable



# 2009 ≠ 1993

- Congress: Democrats in “control” both times
  - 1993
    - House
      - 12 Committees with jurisdiction
      - Many structural barriers to passage
    - Senate
      - Rivalry between Moynihan and Kennedy
  - 2009
    - House
      - New Chairs, Speaker
    - Senate
      - Baucus, Kennedy both anxious for reform



# 2009 ≠ 1993

## ■ White House

### □ 1993

- F.O.B.&H. in charge
- Secretary of HHS not in charge
- Delayed action, honeymoon ended
- Bungled relationships with Congress

### □ 2009

- Same leader in charge at HHS and White House
- Deep experience working with Congress
- Committed to early action



# 2009 ≠ 1993

## ■ Interest Groups

### □ 1993

- Harry & Louise created by HIAA
- Big business never out front in support
- “Organized” medicine still opposed

### □ 2009

- AHIP supporting universal coverage
- Small & large business expressing support
- Organized medicine supportive



# 2009 ≠ 1993

## ■ Level of Debate

### □ 1993

- “15%” rule undercut public support
- Secrecy in plan development put interest groups on defensive
- Barely beginning to understand importance of health information technology

### □ 2009

- Insured now feeling pinch
- Transparency stressed: change.gov soliciting input
- H.I.T. central from many perspectives



---

So...What will happen in 2009?

It's tough to make predictions, especially  
about the future  
(attributed to) Yogi Berra

---



SCHOOL OF  
COMMUNITY  
MEDICINE®

The University of Oklahoma Health Sciences Center  
**College of Public Health**

# Features of Obama Approach to Health Care Reform from Change.gov

*Make Health Insurance Work for People and  
Businesses -- Not Just Insurance and Drug  
Companies.*

- Require insurance companies to cover pre-existing conditions so all Americans regardless of their health status or history can get comprehensive benefits at fair and stable premiums.
- Create a new Small Business Health Tax Credit to help small businesses provide affordable health insurance to their employees.
- Lower costs for businesses by covering a portion of the catastrophic health costs they pay in return for lower premiums for employees.
- Prevent insurers from overcharging doctors for their malpractice insurance and invest in proven strategies to reduce preventable medical errors.



# Features of Obama Approach to Health Care Reform from Change.gov

## *Make Health Insurance Work for People and Businesses -- Not Just Insurance and Drug Companies.*

- Make employer contributions more fair by requiring large employers that do not offer coverage or make a meaningful contribution to the cost of quality health coverage for their employees to contribute a percentage of payroll toward the costs of their employees' health care.
- Establish a National Health Insurance Exchange with a range of private insurance options as well as a new public plan based on benefits available to members of Congress that will allow individuals and small businesses to buy affordable health coverage.
- Ensure everyone who needs it will receive a tax credit for their premiums.



SCHOOL OF  
COMMUNITY  
MEDICINE®

The University of Oklahoma Health Sciences Center  
**College of Public Health**

# Features of Obama Approach to Health Care Reform from Change.gov

*Reduce Costs and Save a Typical American Family up to \$2,500 as reforms phase in:*

- Lower drug costs by allowing the importation of safe medicines from other developed countries, increasing the use of generic drugs in public programs, and taking on drug companies that block cheaper generic medicines from the market.
- Require hospitals to collect and report health care cost and quality data.
- Reduce the costs of catastrophic illnesses for employers and their employees.
- Reform the insurance market to increase competition by taking on anticompetitive activity that drives up prices without improving quality of care.



SCHOOL OF  
COMMUNITY  
MEDICINE®

The University of Oklahoma Health Sciences Center  
**College of Public Health**

# Baucus White Paper

- Emphasize primary care, preventive care, and wellness services
- Calls for improved reimbursements for primary care through redesign of the Medicare payment system into a Medical Home model of care
- Financial Incentives and other strategies to promote adoption of Advanced Clinical Health Information Technology



# “Likely” sequence (remembering Yogi)

## ■ **Early Economic Recovery plan with health provisions**

- Help states with Medicaid conundrum: increasing demand for Medicaid just as tax rolls decline
- Reauthorize State Children’s Health Insurance Program
- Health coverage assistance for unemployed
- Don’t do Medicare spending cuts

## ■ **Full health reform plan also on track**

- Health reform as central to economic recovery, not something that needs to be postponed until economy recovers
- Generally pursue the Obama plan as presented
- Modify plan based on public input





NEW AMERICA  
FOUNDATION

---



# Health Reform in 2009

**Len Nichols, Ph.D.**  
**Director, Health Policy Program**  
**New America Foundation**

**IBM Health Care and Life Sciences Webinar**  
**December 10, 2008**



IBM Healthcare and Life Sciences

# Transformation Patient Centered Medical Home

Paul Grundy, MD, MPH  
Director, Healthcare Transformation, IBM  
Corporation

Quiet revolution in health as the era of comprehensive primary care dawns.



*Patient-Centered  
PRIMARY CARE  
Collaborative*

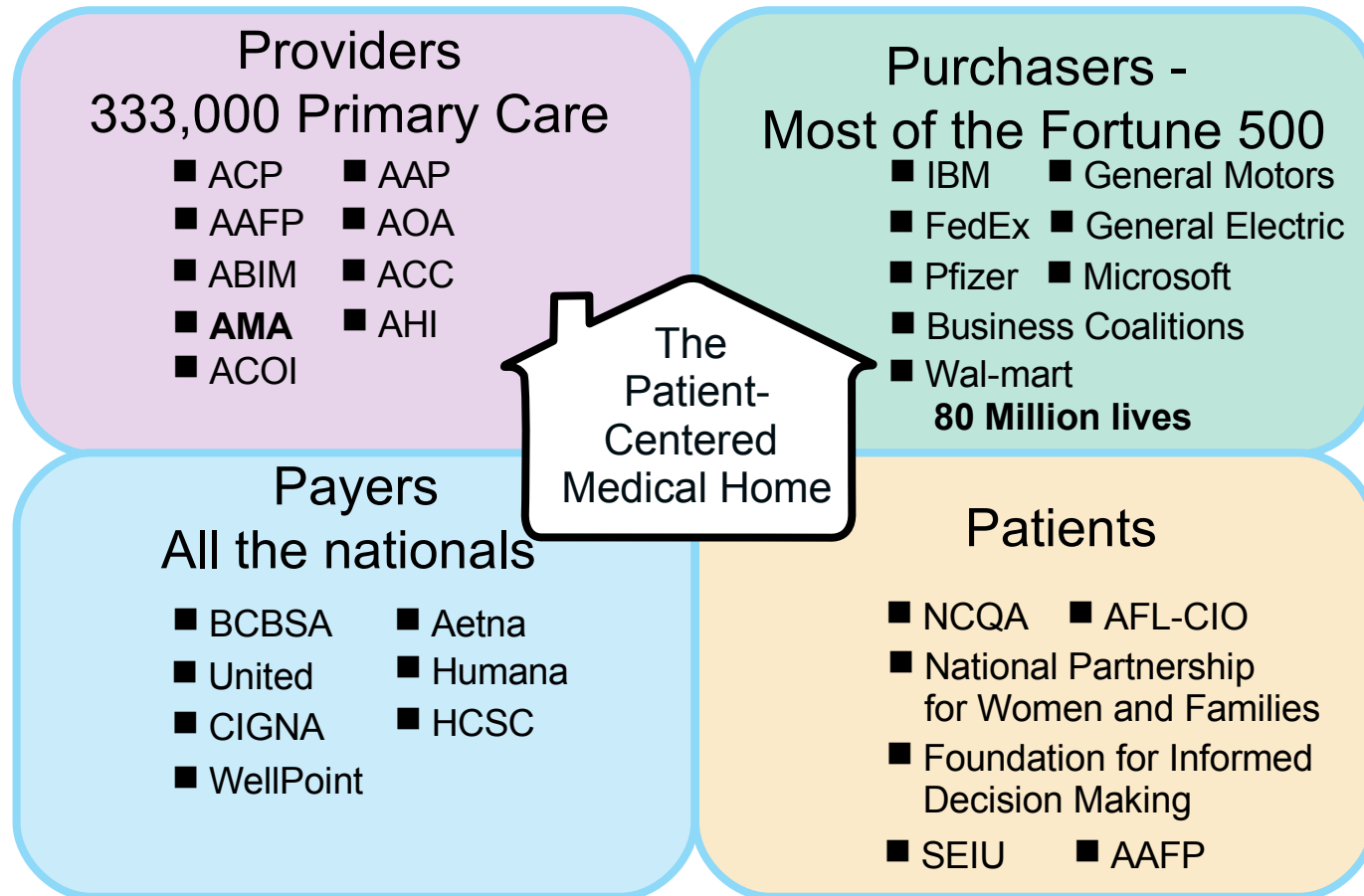
A long-term comprehensive relationship with your Personal Physician empowered with the right tools, technology and team can result in better overall family health...

# AMA endorses the Patient Centered Medical Home Nov 2008



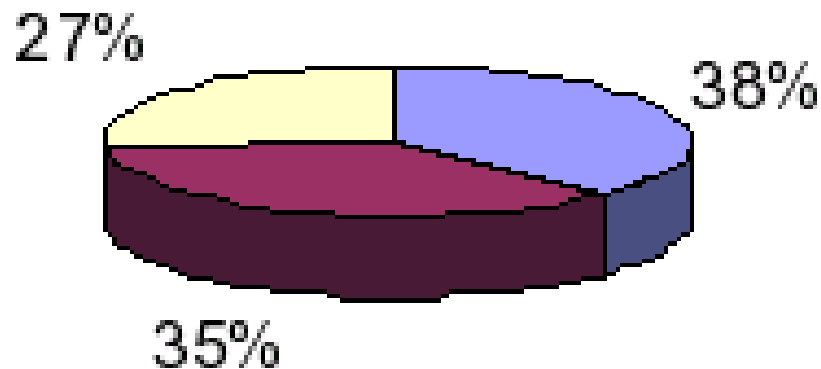
# The Patient-Centered Primary Care Collaborative

## Examples of Broad Stakeholder Support & Participation



## Here's What You Said.....

Which of the following should be the Obama Administration's highest healthcare priority?



- Reduce healthcare costs
- Increase focus of preventative care
- Increase healthcare coverage

# Other Information



To receive the IdeaWatchHealth & IdeaWatchPharma e-newsletters go to [www.ibm.com/vrm/subscribe2iw](http://www.ibm.com/vrm/subscribe2iw)



To access the Healthcare 2015 Thought Leadership Series go to [www.ibm.com/healthcare/hc2015](http://www.ibm.com/healthcare/hc2015)



To access Turning an Office into a Home go to [http://www.ibm.com/ibm/ideasfromibm/us/healthcare/20081203/index.shtml?sa\\_campaign=message/ideas/leadspace/all/healthcareflash](http://www.ibm.com/ibm/ideasfromibm/us/healthcare/20081203/index.shtml?sa_campaign=message/ideas/leadspace/all/healthcareflash)



To access the patient centered medical home: Reforming healthcare for quality patient care go to <http://www-03.ibm.com/industries/healthcare/us/detail/landing/Y195013119184U48.html>

## Listen to replays of recent IBM Web seminars:

Healthcare 2015: The Future of Care Delivery - <http://www.bulldogsolutions.net/MedTech/MED06112008/frmRegistration.aspx?bdls=14843>

The IBM Global CEO Study: Insights for Healthcare and the Life Sciences - <http://www.bulldogsolutions.net/MedTech/MED09102008/frmRegistration.aspx?bdls=16150>

# QUESTIONS?

Submit your question to today's speakers by typing your question into the box on the left side of your screen and then hitting 'submit.'

If you have news or comments on this topic for the editors of *Healthcare IT News* and *Healthcare Finance News*, please email [editor@healthcareitnews.com](mailto:editor@healthcareitnews.com)

SPONSORED BY:

